

## ART.1820



Electronic and programmable radiator thermostat

- Energy savings
- Provides high comfort
- Frost protection
- Backlit display
- Up to two periods of temperature reduction on weekdays and one on holidays
- PID (Proportional - Integral - Derivative) precise control
- Adaptive learning
- Weekday / holiday programming with adjustable temperature reduction
- Battery lifetime 2 years
- Min./max. temperature limitation
- Child lock
- Holiday/away function
- Open window function
- Valve exercise function - prevents accidental blocking

## 1 DESCRIPTION

The thermostatic control Art.1820 is a compact radiator thermostat that can be programmed to automatically reduce the room temperature to save on heating costs, with the additional benefit of reducing energy consumption. Equipped with three pre-installed programs - P0, P1 and P2 - designed to satisfy most needs and to differentiate room temperatures over the week:

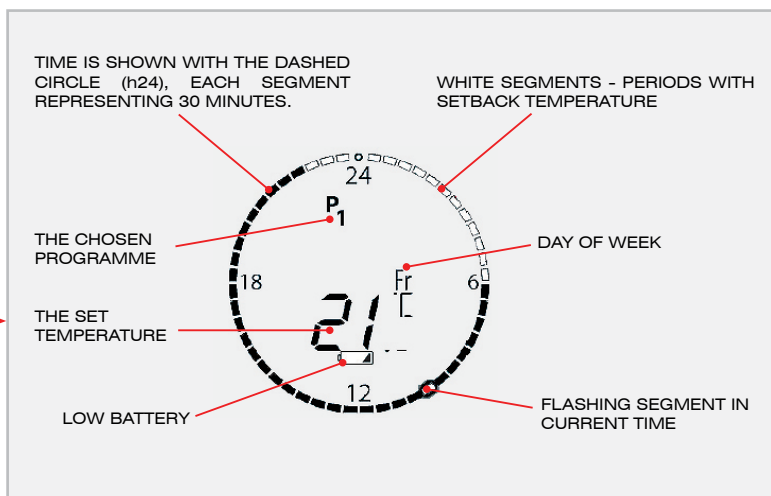
-**P0**: Programme without automatic temperature reduction. This programme maintains the temperature constant all day and night.

-**P1 and P2**: change the temperature at set times of the day to achieve greater energy savings and regulate heating when the home is occupied, depending on the user's lifestyle. Two energy saving periods can be configured for weekdays and one for the weekend.

TWO ARROW BUTTONS WHICH ALLOW YOU TO NAVIGATE THE DISPLAY AND THE MENUS AND TO SET THE TEMPERATURE.



THE DOT BUTTON IS USED TO SELECT AND CONFIRM.



## 1.1 THERMOSTAT FUNCTIONS



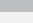
The FAR chrono-thermostatic control is equipped with some functions that allow further advantages:

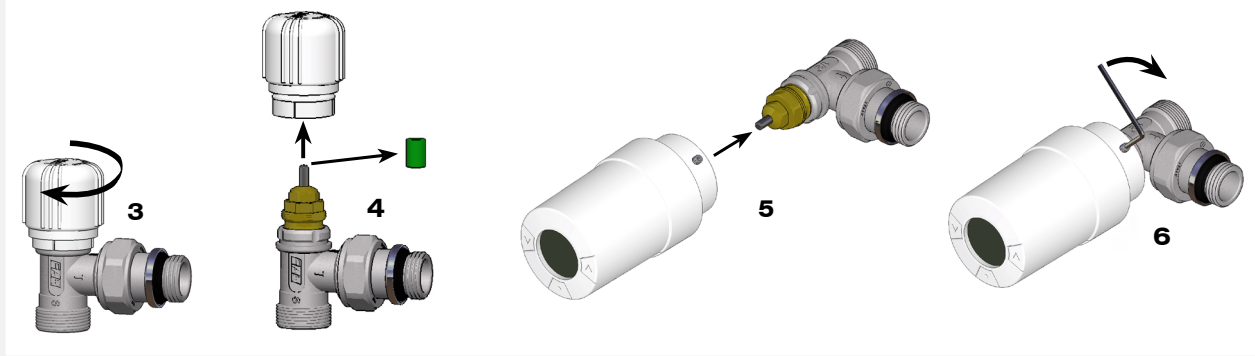
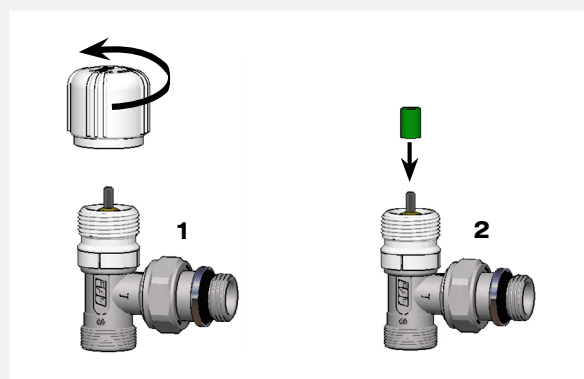
- **Open window:** which closes the valve if the room temperature is falling dramatically, thus reducing the heat loss. The heat is turned off for up to 30 minutes, before returns to its original settings.
- **Travel programme:** which lowers the temperature when you are away. Time and temperature are configurable.
- **Child lock:** protect your settings from tampering.
- **Temperature limitation:** allows you to change the temperature range so that the user decides the maximum and minimum. This is useful, for example, in rooms with public access.
- **Frost protection program:** The thermostat will maintain a constant temperature of 4-10 °C in the room, ensuring frost protection.
- **Automatic valve exercising:** To keep the radiator valve functional and at its best, automatically exercises the valve by opening it fully and then return to normal setting.

**2 INSTALLATION**

**⚠ The thermostat can only be installed in a horizontal position with the selection button facing downwards (fig.5)**

The control is supplied complete with alkaline batteries, a 2mm allen key and the green extractor.

- 1 Unscrew the handle
- 2 Insert the green extractor (provided in the box)
- 3 Re-insert the handle...and re-screw it tight...
- 4 ...until the plastic protective joint is released and can be removed with the handle.
- 5 Position the thermostat until the grooves click into position
- 6 ...and locked by screwing the screw with a 2mm Allen key.
- 7 Press  for 3 seconds to select the Function Menu.
- 8 A little  flashes, press  to activate the installation mode.



**⚠ The thermostat must not be used in systems exposed to atmospheric agents!**

**⚠ In case of installation on radiators placed inside niches or curtains, the room temperature could differ from the value shown on the display!**

**3 TECHNICAL AND DIMENSIONAL FEATURES**

DISPLAY	Grey digital with backlight
THERMOSTAT TYPE	Programmable electronic radiator valve controller
SOFTWARE CLASSIFICATION	A
CONTROL	PID
POWER SUPPLY	2x1,5V AA alkaline
BATTERY LIFE	2 years
AMBIENT TEMPERATURE RANGE	0 to 40°C
TRANSPORTATION TEMPERATURE RANGE	-20 to 65°C
TEMPERATURE SETTING RANGE	6 to 28°C
RECOMMENDED USE	Residential (pollution degree 2)
OPEN-WINDOW FUNCTION	Activated at temperature drop of approx. 0.5 °C over 3 minutes
NOISE LEVEL	< 30 dBA
WEIGHT (INCL. BATTERIES)	177 g (with RA adapter)
SAFETY CLASSIFICATION	Type 1
MAXIMUM WATER TEMPERATURE	90°C
SPINDLE MOVEMENT TYPE	Linear
SPINDLE MOVEMENT	2/3 mm on valve (1 mm/s)
MAX. SPINDLE MOVEMENT	4,5 mm
MEASUREMENT INTERVAL	Measures temperature every minute
POWER CONSUMPTION	3 μW in standby, 1.2 W when active
IP CLASS	20

